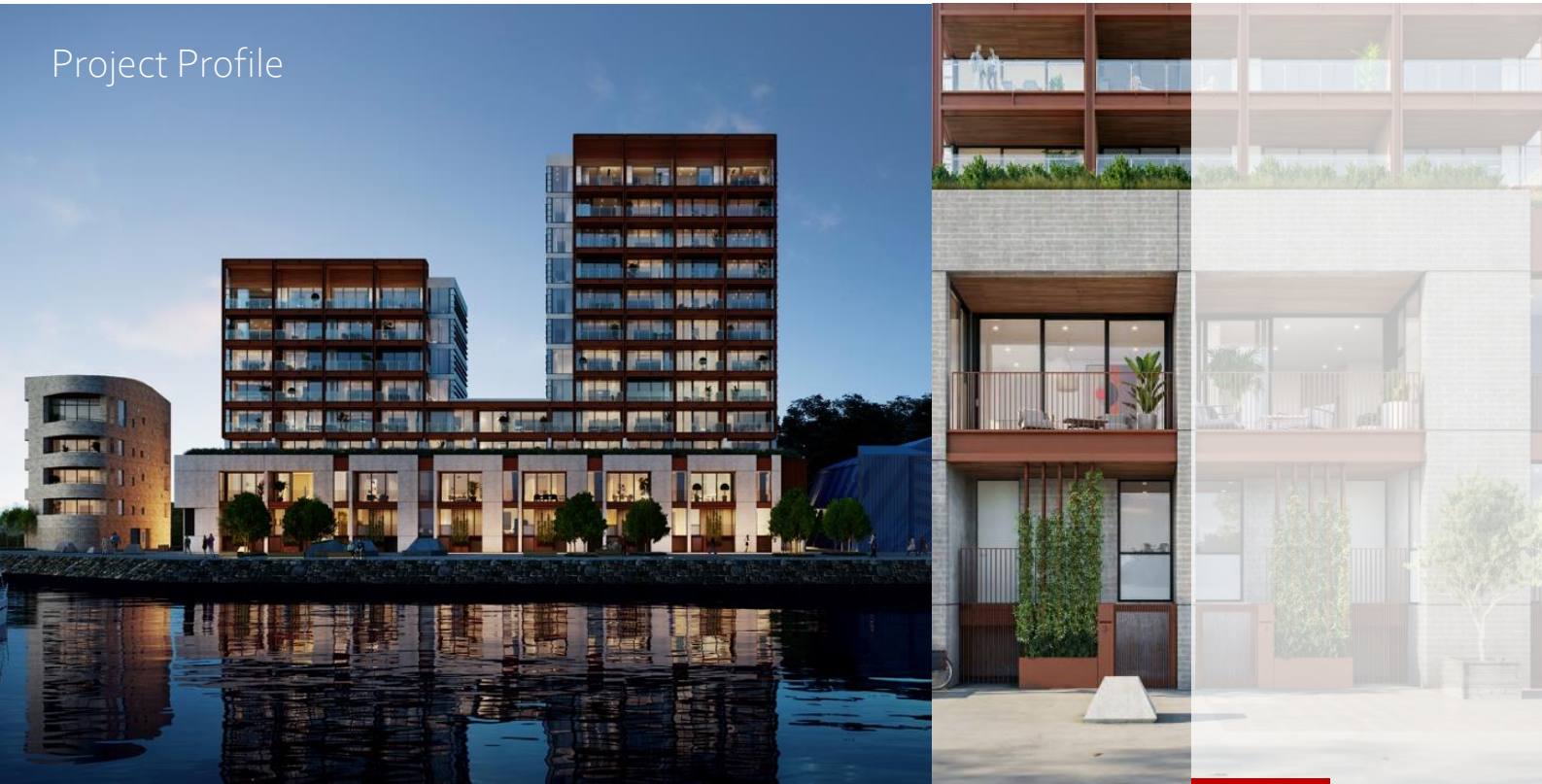


Willis Bond & Co

CATALINA BAY APARTMENTS

Project Profile



PROJECT SUMMARY

A residential apartment development comprises of terrace houses, an apartment building and associated parking. The apartment building has one nine level tower and one thirteen level tower. Automatic sprinkler and smoke detection system provided throughout.

Fire design developed in accordance with the C/VM2 framework.

CROSSFIRE VALUE TO PROJECT

Crossfire developed a performance-based design to enable a single set of stairs to serve each tower.

We developed the fire design to the C/VM2 which resulted in a reduced construction cost and more apartment spaces from that required by an Acceptable Solution design.

Client

Willis Bond & Co

Architect

Architectus

Date

Completion 2022

Project Value

\$40m