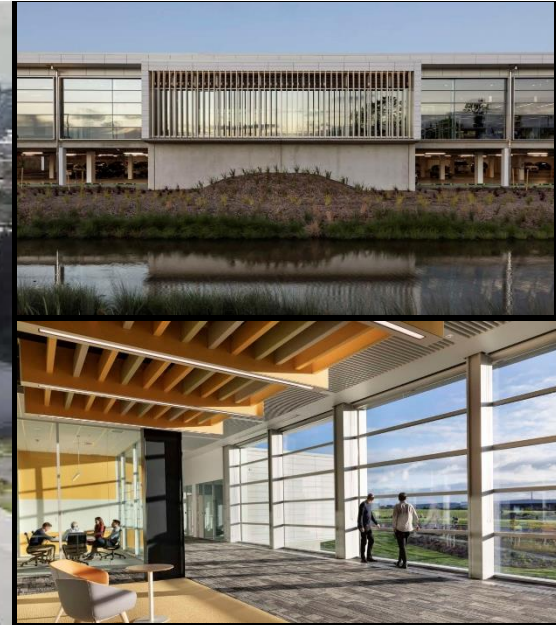


Fisher & Paykel Healthcare Properties Ltd

Fisher & Paykel Healthcare Building 4



Project Summary

A new manufacturing, workplace, research and distribution facility built for Fisher & Paykel Healthcare at their East Tamaki site in Auckland. The new facility includes workspace, breakout and meeting space to support 700 staff in an open plan environment; over 4000 sqm of manufacturing space, laboratories and cafeterias; and a dedicated distribution centre to supply Fisher & Paykel Healthcare's global market. The building covers approximately 38,000m² across a single level with a further 12,000m² of under-croft carparking.

The workplace design was driven with a focus on wellness and employee wellbeing. Courtyards featuring extensive native planting provide natural daylight and views to nature from both the office and manufacturing environments. Landscaped outdoor spaces are provided alongside common areas that connect to the wider landscaped environment.

Crossfire Value to Project

Crossfire developed a fire safety design to enable this mixed-use building to be open plan. Crossfire worked closely with the design team to deliver the fully detailed and coordinated building in 3D BIM environment.

During construction Crossfire carried out inspections to monitor the ongoing works to ensure all the fire safety features were property installed.

Client

Fisher & Paykel Healthcare
Properties Ltd

Architect

Warren and Mahoney

Date

Completion 2020

Project Value

\$100m+