

Highbrook Development Ltd

UNDERWOOD SPEC 2,500

Project Profile

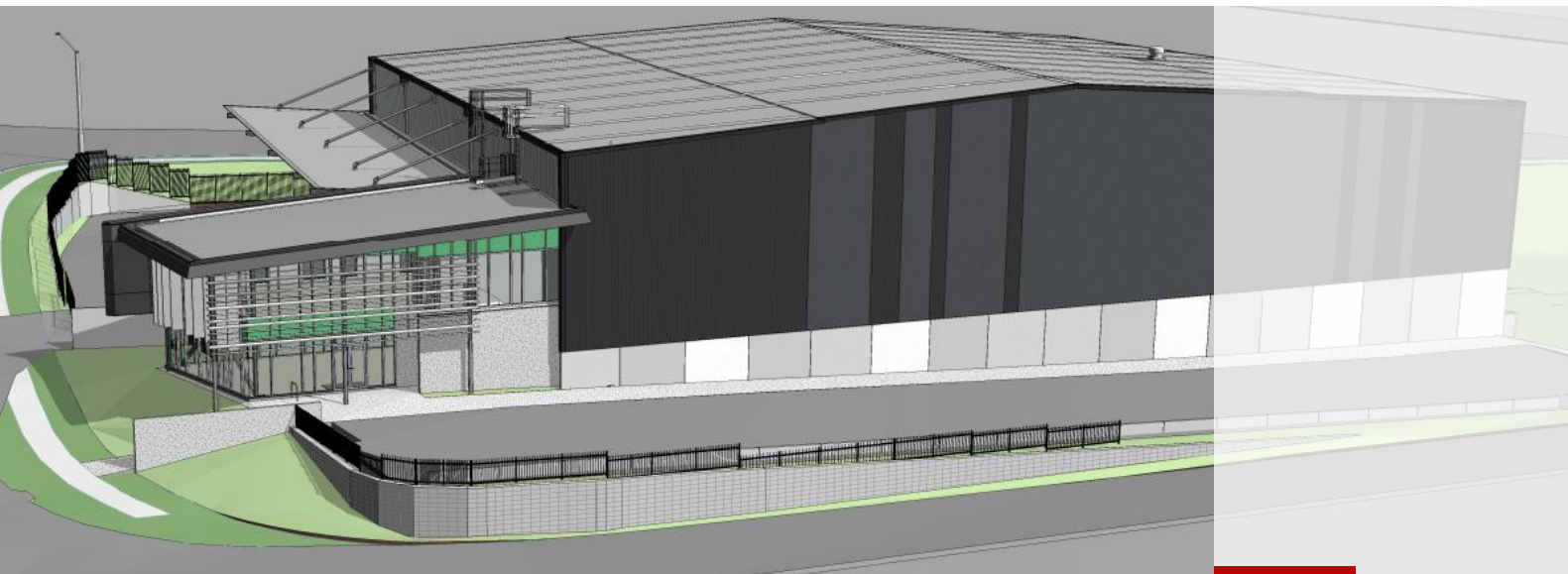


Image courtesy of Williams Architects

PROJECT SUMMARY

Modern speculative warehouse and office development at Highbrook Business Park, Auckland.

The project consists of a new spec warehouse covering 2,500m² warehouse with adjoining 2-level office.

The fire design is performance-based and was developed in accordance with the C/VM2. This approach enabled a non-sprinklered design solution and removal of internal fire separations between office and warehouse, facilitating open and visual connection between office and warehouse.

Non-sprinklered solution enables maximises storage height and flexibility within warehouse, optimizing leasing potential with little to no restrictions on storage type, layout and volumes.

CROSSFIRE VALUE TO PROJECT

Maximised storage throughout warehouse – type, configuration and height.

Reduced construction cost – removal of internal fire separations between office and warehouse.

Robust regulatory stakeholder consultation resulting in efficient Building Consent approvals.

Client

Highbrook Development Ltd

Location

Highbrook Business Park, Auckland

Sector

Commercial
Industrial

Services

Fire Engineering